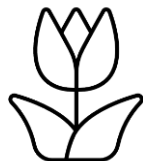
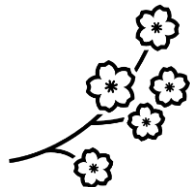


WHAT ARE OUR STAR GARDENERS DOING IN FEB?



Janet Schulz:

February is more or less a “do no gardening” month. The catalogs are in, and you probably are dreaming of what to do this spring, in addition to being busy with your indoor plants. One thing you might consider, if you MUST work outside, is to scalp the leaves off your hellebores. NOT the white ones which are blooming now though; they are Hellebore “niger”. On these, you need only to remove the leaves which are damaged or disfigured. For another hellebore variety known as 'hybridus', which blooms later, ALL the leaves should be cut off. This allows the flowers to shine and prevents the spread of any fungus that might be on the leaves.

If you have Prime TV, I recommend ‘The Gardener’ and ‘The Garden Chronical’, in addition to other garden programs they have to offer. Check them out!

Sharon Ma:

I love eggplants, so I am looking through my seed catalogs for some new varieties! 😊

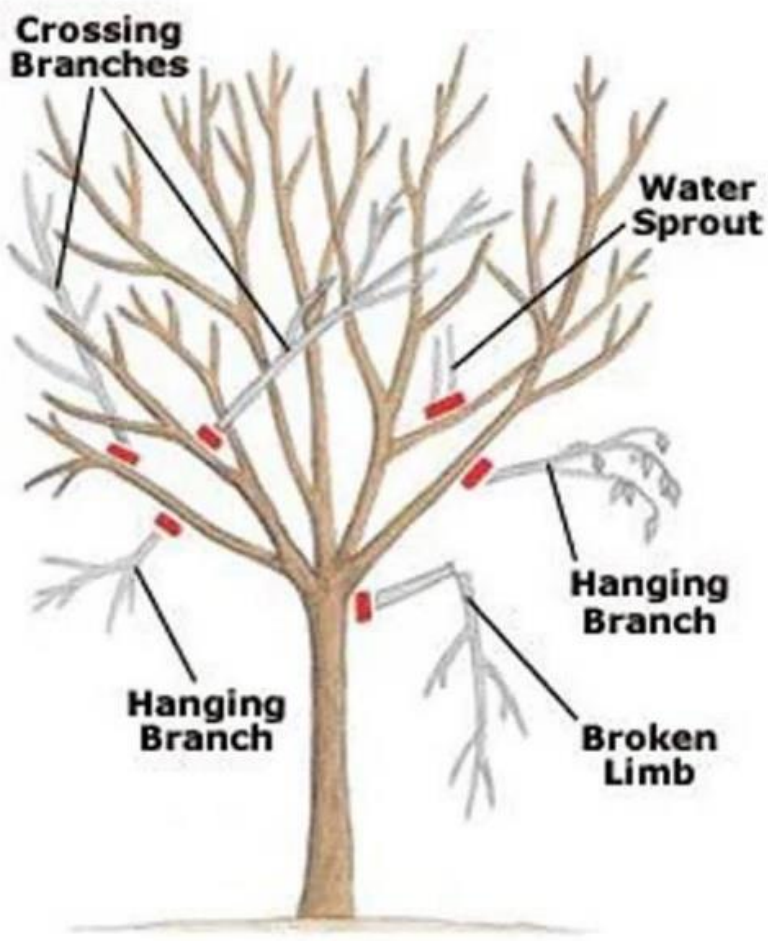
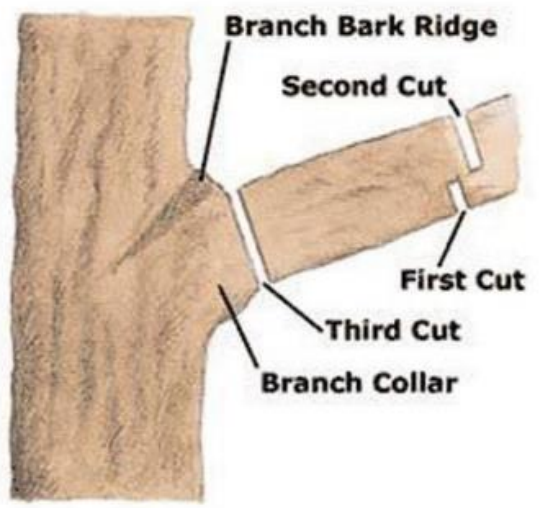
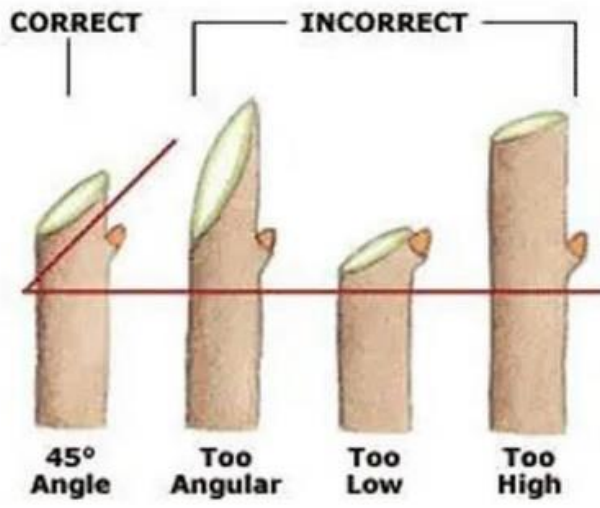
The weather was mild last weekend, so I did some garden cleaning. I pruned a rose bush and one of my perennial beds. February is a good time to prune roses and some deciduous trees because you can see all the branches. However, be careful not to prune any spring blooming trees, such as peach, cherry, dogwood and many more. If not sure, google the plant before pruning.

This is the time to check your plants to see if there are any spotted lantern fly eggs on tree trunks and branches. Scrap them off and discard the eggs.

Here I am sharing some of my favorite diagrams on tree pruning, house plant caring, Spotted lanternfly life cycle and how to water lithops, also called living stone. Hope they are useful to you. (In order for you to be able to read the small prints, I enlarged the diagrams to fill each page.)

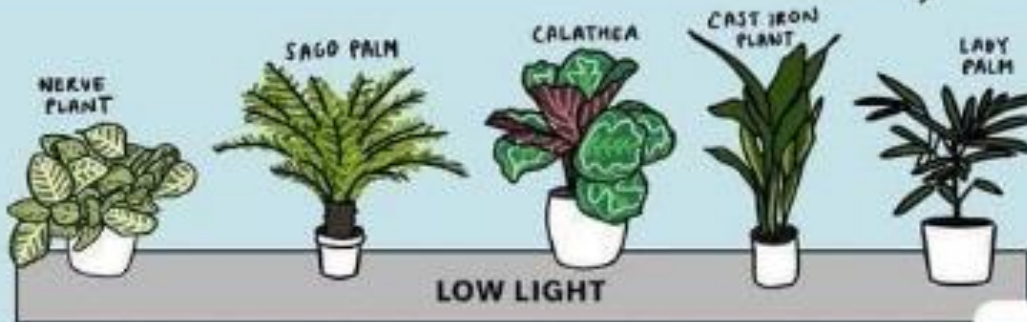
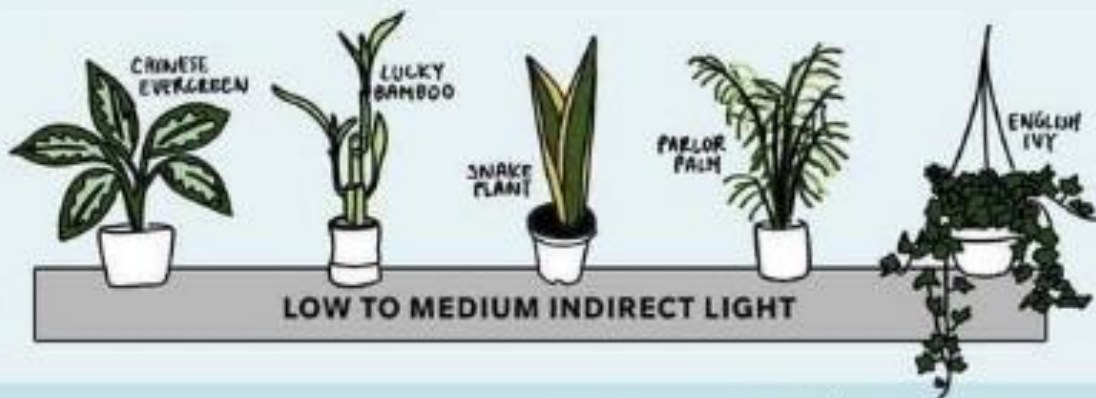
Eggplants





Low-Light Indoor Plants

THAT THRIVE IN NEAR DARKNESS



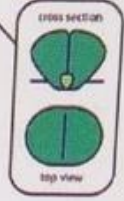
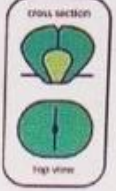
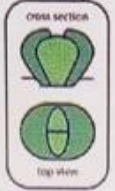
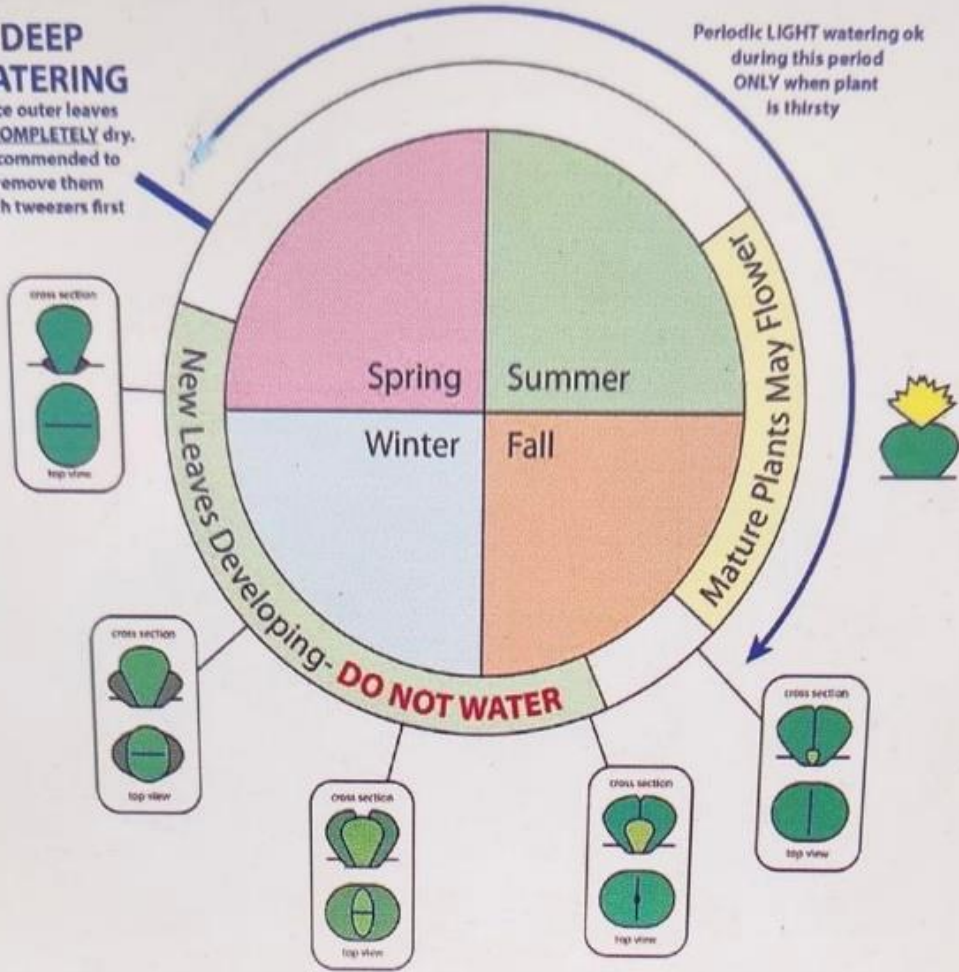
LITHOPS

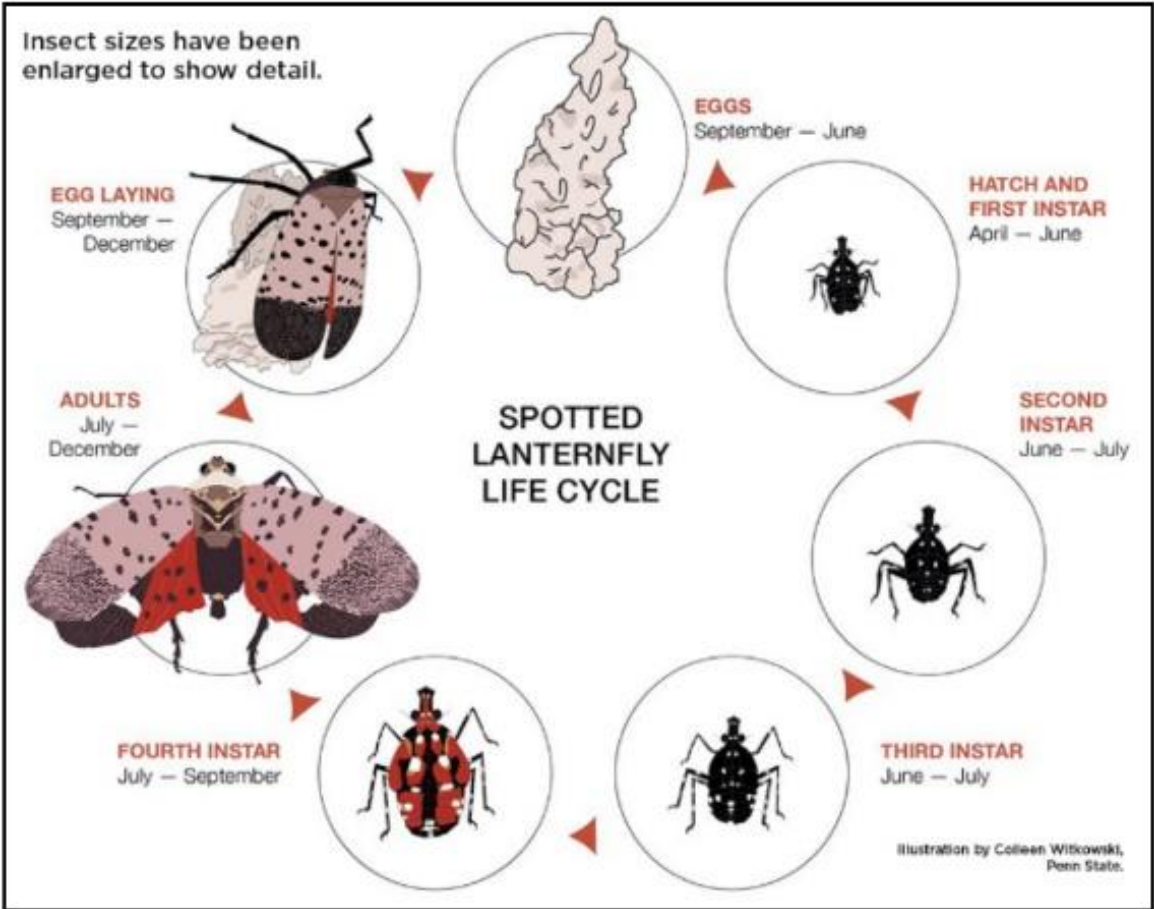
@supaslim

DEEP WATERING

once outer leaves are COMPLETELY dry. Recommended to remove them with tweezers first

Periodic LIGHT watering ok during this period ONLY when plant is thirsty





Spotted Lanternfly Biology